

Crochet Machines 2021 Catalogue



Quality is produced, not controlled!

SANTEKS
TEXTILE MACHINERY

About us

Santeks Tekstil Makineleri İth. İhr. Ltd. Şti. started its business in 2003 with the principle “providing world standard products to its customers producing/providing the state of the art/modern technology textile machinery” has become a company elaborating the principle of highest customer satisfaction which provides the best technical services to all textile manufacturers in Turkey from the smallest to the biggest.

Santeks Textile Machinery, which opened its first overseas office in Uzbekistan / Tashkent in 2008, exports to many countries, especially Uzbekistan. It has acquired Boosan brand in 2017. Our efforts to respond the demands from North Africa is going on with our offices opened in Algeria in 2018 and Tunisia in 2019. Since the day it was founded, our company has drawn many textile machinery projects and has established a production line and has become a reliable brand in the countries where it operates.

It continues its operations with the motto “**quality is produced not controlled**”.

Our brands

SANTEKS
TEKSTİL MAKİNELERİ

BOOSAN
TEKSTİL MAKİNELERİ

JACTEK

Tazu

AXE & LION

Our certificates



JYG2B

Series of crochet machine



JYG2B

616/B8 Crochet machine

Model	616/B8
Operation space	24" inch (609 mm) x 2
Weft bars	8
Gauge	14 / 15 / 20
Motor	2 HP
Standard equipment	Auto weft sending
	Finish product collecting device
	Rubber feeding device
	Auto stop motion system
	Warp and weft reed



Website
www.santeksmakine.com



E-Mail Address
info@santeksmakine.com



Call Center
+90 212 556 05 76 pbx



JYG2B

Series of crochet machine



JYG2B

616/B3 Crochet machine

Model	616/B3
Operation space	24" inch (609 mm) x 2
Weft bars	3
Gauge	14 / 15 / 20
Motor	2 HP
Standard equipment	Auto weft sending
	Finish product collecting device
	Rubber feeding device
	Auto stop motion system
	Warp and weft reed

JYG2

Series of crochet machine



JYG2

762/B3 Crochet machine

Model	766/B3	766/B8
Operation space	30" inch (762 mm)	
Weft bars	3	8
Gauge	14 / 15 / 20	15 / 20
Motor	2 HP	
Standard equipment	2HP Inverter choose	2HP Inverter
	Finish product collecting device	
	2 Sets Rubber feeding device	
	Auto stop motion system	
	Warp and weft reed	



Website
www.santeksmakine.com



E-Mail Address
info@santeksmakine.com



Call Center
+90 212 556 05 76 pbx



JYC

Series of crochet machine



JYC

610/B8 Crochet machine

Model	JYC 610/B8
Operation space	24" inch (609 mm)
Weft bars	8
Gauge	15 / 20
	Operating motor 1.5 HP (1 Unit)
	2 HP Inverter (1 Set)
Standard equipment	Warp and weft reed (1 Set)
	Finish product collection device (1 Set)
	Auto stop motion system (2 Sets)
	Rubber feeding device (2 Sets)
	Auto weft sending
Machine (Packing means) mm	1.880 x 1.1100 x 2.100
Creel (Packing means) mm	3.000 x 400 x 350

JYC

Series of crochet machine

**JYC**

762/B3 Crochet machine

Model	762/B3	
Operation space	30" inch (762 mm)	
Weft bars	3	
Gauge	12 / 13 / 14 / 15 / 20	
Motor	1.5 HP	
Speed	(Maximum idle speed) 1.500 r/min	
Weaving width / Number	80 cm / 60	1.5 cm / 40
	2.5 cm / 24 ~ 26	3.2 cm / 20
	6 cm / 10 ~ 11	7.5 cm / 8 ~ 9
Standard equipment	2 HP inverter choose	
	2 Sets rubber feeding device	
	Auto stop motion system	
	Warp and weft reed	
Machine (Packing Means) mm	1.800 x 1.000 x 1.800	
Creel (Packing Means) mm	3.300 x 400 x 350	



Website
www.santeksmakine.com



E-Mail Address
info@santeksmakine.com



Call Center
+90 212 556 05 76 pbx

**06**

JYC

Series of crochet machine



JYC

762/B8 Crochet machine

Model	762/B8
Operation space	30" inch (762 mm)
Weft bars	8
Gauge	15 / 20
Motor	1.5 HP
Speed	(Maximum idle speed) 1.500 r/min
Weaving width / Number	2 cm / 30 ~ 32
	4 cm / 16
	8 cm / 8
Standard equipment	2 HP inverter
	2 Sets rubber feeding device
	Auto stop motion system
	Warp and weft reed
Machine (Packing Means) mm	2.000 x 1.000 x 1.800
Creel (Packing Means) mm	3.300 x 400 x 350

JYG

Series of crochet machine

**JYG**

612/B16 Jacquard Crochet machine

Model	612/B8	612/B11	612/B16
Operation space	24" inch (609 mm)		
Weft bars	8	11	16
Gauge	15 / 20		
Motor	1.5 HP		
Standard equipment	Auto weft sending		
	2 HP inverter		
	Finish product collection device		
	2 Sets rubber feeding device		
	Auto stop motion system		
	Warp and weft reed		
Machine (Packing means) mm	2.550 x 1.120 x 2.200	2.100 x 1.120 x 1.800	1.800 x 1.120 x 1.800
Creel (Packing means) mm	3.000 x 400 x 400	3.000 x 400 x 400	3.000 x 400 x 400



Website
www.santeksmakine.com



E-Mail Address
info@santeksmakine.com



Call Center
+90 212 556 05 76 pbx

**08**

JYG

Series of crochet machine



JYG

Crochet machine

Model	612/B11	612/B8	612/B8(A)	612/B3
Operation space	24" inch (609 mm)			
Weft bars	11	8	8	3
Gauge	15 / 20			14 / 15 / 20
Motor	1.5 HP			
Standard equipment	Auto weft sending			
	2 HP inverter			
	Finish product collectiong device			
	2 Sets rubber feeding device			
	2 HP inverter choose		2 HP inverter	
	2 Sets rubber feeding device			
	Auto stop motion system			
	Warp and weft reed			
Machine (Packing Means) mm	2.550 x 1.120 x 2.200		2.100 x 1.120 x 1.800	1.800 x 1.120 x 1.800
Creel (Packing Means) mm	3.000 x 400 x 400		3.000 x 400 x 400	3.000 x 400 x 400

*612/B8 is the common chain box, also can choose equipped with large chain box 612/B8A configuration.

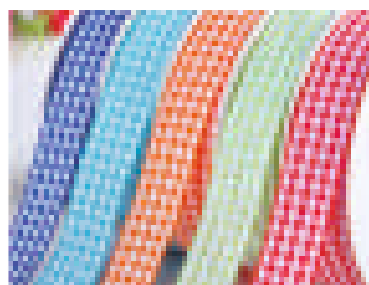
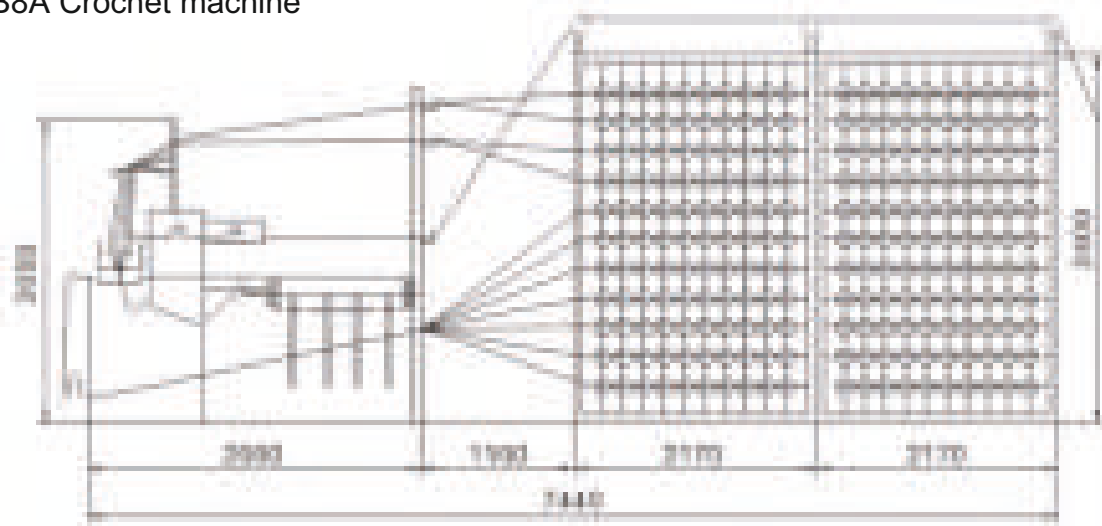
JYG

Series of crochet machine



JYG

612/B8A Crochet machine



Website
www.santeksmakine.com



E-Mail Address
info@santeksmakine.com



Call Center
+90 212 556 05 76 pbx

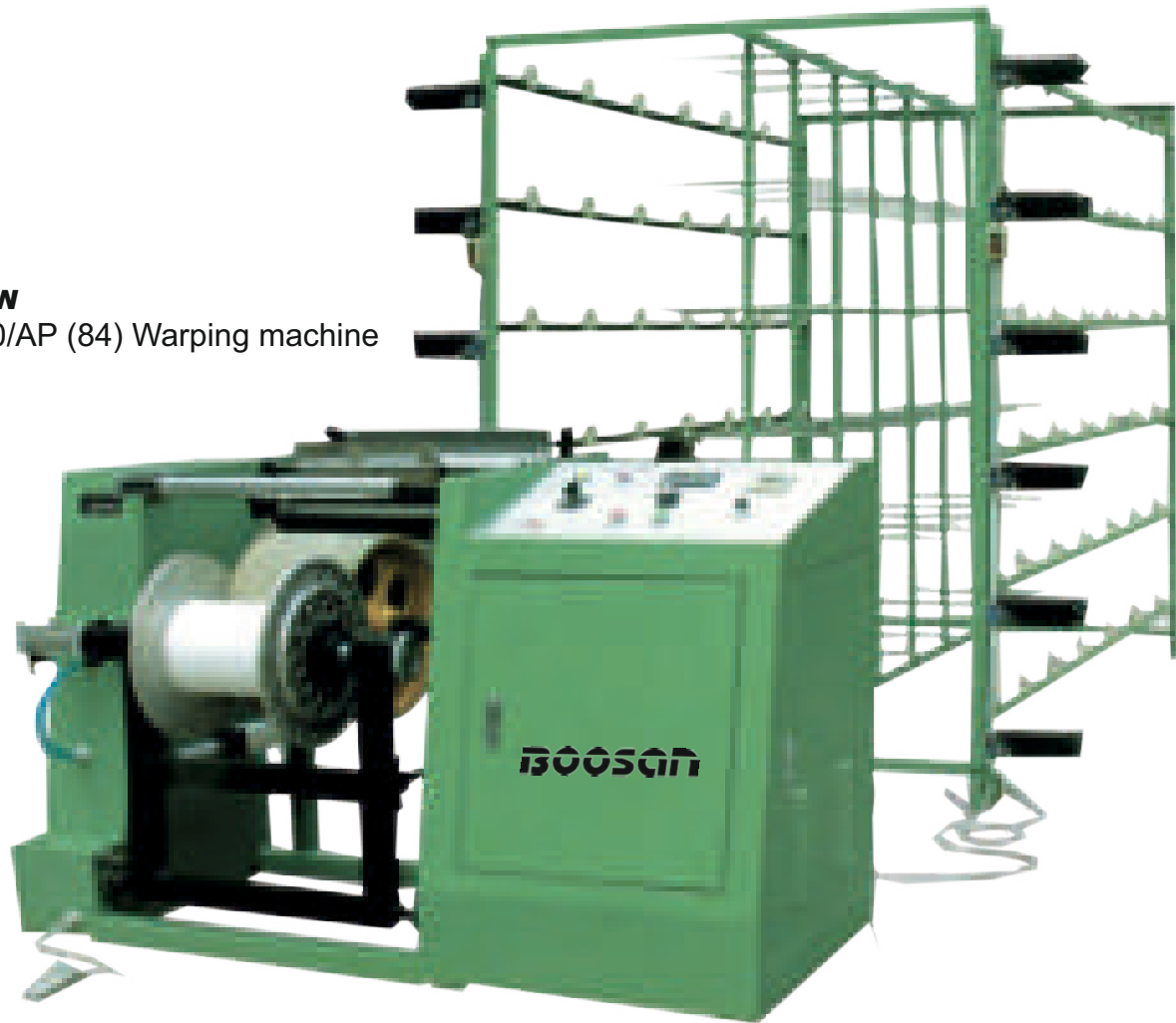


JYW

Warping machine

JYW

400/AP (84) Warping machine



Optimally and flexibly used in the warping of kinds of nylon, fiber, cotton yarn and etc

Diameter of the applicatio beam is below 400mm, diameter of inside hole is 17mm or 20mm, inside length is 255mm.

Model	JYW400/AP	JYW450/AP
Specifications	Apply to beam under 400 mm Axis core diameter of beam > 110 mm	Apply to beam under 450 mm Axis core diameter of beam > 125 mm
Speed adjustment	Frequency control: 0 ~ 350 r/min (Line speed 0 ~ 390 m/min)	
Set length	Use the counter to set any warp length according to the requirement, this measure can reduce the loss of warp	
Width and density adjustment	Adopt 4 pieces of W-reed; adjust width and the left and right device randomly	
Motor	2 HP / 4 P / 380 V / 9 Phase	

JYW

400/APS Spandex warping machine (Neating machine)



JYW

400/APS Spandex warping machine (Neating machine)

Optimally and flexibly used in the neatening of various kinds of ammonia-chartered and root-chartered yarn; the nose frame and the back frame of the machine are driven by different horsepower, and the frequency conversion set enables free adjustment of the rubber tension.

Diameter of the applicat beam is below 400mm, diameter of inside hole is 17mm or 20mm, inside length is 255mm.

Model	JYW400/APS Apply to beam under 400 mm			
Model	60	72	84	96
Performance	2 sets yarn breaking and stopping device 1 set infrared control yarn breaking and stopping device 1 set yarn breaking and warp stopping sheet			
Speed adjustment	Frequency control: 0 ~ 350 r/min (Line speed 0 ~ 390 m/min)			
Set length	Use the counter to set any warp length according to the requirement, this measure can reduce the loss of warp			
Width and density adjustment	Adopt 4 pieces of W-reed; adjust width and the left and right device randomly			
Motor	2HP / 4P / 380 V / 3 Phase			



Website
www.santeksmakine.com



E-Mail Address
info@santeksmakine.com



Call Center
+90 212 556 05 76 pbx



Head Office



Website
www.santeksmakine.com



E-Mail
info@santeksmakine.com



Machinery Department
+90 555 634 44 09



Spare Part Department
+90 536 639 44 36



Call Center
+90 212 556 05 76 pbx



Fax
+90 212 556 09 01



Address
Sanayi Mah. Atatürk Cad. Çeşme İş Merkezi
No:116/14-16 Güngören - İstanbul / Türkiye

Branch Office (Uzbekistan)



Call Center
+998 71 281 17 52



Fax
+998 71 281 17 52



Mobile
+998 94 686 00 44



Address
Uzbekistan Republic,
Tashkent City Chilonzor District,
Muqimiy Street House 106

